



## NEW MULTI-LINE LASERS FROM STABILA

### LAX 600/LAX 600 G multi-line lasers: maximum visibility for efficient levelling

- **Two models with red or green laser lines**
- **Fast self-levelling function for immediate use on construction sites**
- **Long operating times thanks to CAS 12 V battery**

The new, battery-powered LAX 600 and LAX 600 G multi-line lasers from STABILA are versatile tools that make indoor measurements simple and straightforward. Three 360° lines allow for efficient levelling in the horizontal and vertical position at the same time, while two vertical lines at right angles to one another enable the room to be divided into 4 x 90°. And then there's a plumb line upwards and downwards, created by the point of intersection of the vertical lines, and a horizontal line for exact height transfers and precise layout work.

The new laser is designed for measuring tasks in different trades:

- **Drywall construction:** Completing layout work, positioning partition walls, suspending ceilings
- **Electrical installation:** Transferring heights quickly and easily, aligning plug sockets, switches and cable ducts horizontally and vertically with one another
- **Joinery:** Transferring heights reliably, transferring drill holes accurately, aligning worktops quickly, aligning and installing furniture and cabinets with precision
- **Tiling:** Marking out tile layouts, aligning and laying tiles
- **Plumbing:** Transferring marking points accurately to align pipe clips horizontally and vertically with one another, positioning and installing lines and heating pipes quickly

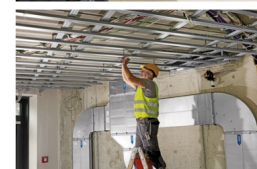
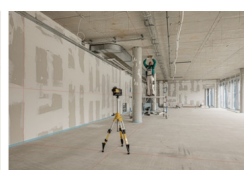
#### Red or green laser lines?

The main distinction between the two models is the colour of their laser lines: The LAX 600 has red lines with a measuring range of up to 30 metres, while the LAX 600 G has green lines for even better visibility over a measuring range of up to 40 metres. It's possible to work directly on the fine laser lines of both models, with high-performance diodes providing maximum visibility.



The new multi-line laser from STABILA comes with red laser lines (LAX 600) or green laser

lines (LAX 600 G). Both models are available with or without a CAS 12 V. Photos: Stabila



The red lines of the new LAX 600 multi-line laser from STABILA boast high visibility within a range of 30 metres thanks to their high-performance

diodes, allowing efficient levelling in the horizontal and vertical position at the same time.

Photos: Stabila



## NEW MULTI-LINE LASERS FROM STABILA

### LAX 600/LAX 600 G multi-line lasers: maximum visibility for efficient levelling

Both new multi-line lasers work in the same way and are equally straightforward to operate since each button only has one function. Following the speedy self-levelling function powered by pendulum technology designed for the construction site, the laser is ready to use right away. Stable aluminium and glass cages and a shock-absorbent STABILA soft grip casing protect the laser optics against dirt and when dropped. The laser is also waterproof and dustproof in accordance with protection class IP 65.

#### Long service life with powerful CAS battery

The new models are the first STABILA lasers to be powered by a CAS 12 V LI POWER battery (2.0 Ah). This means they are compatible with all CAS 12 V battery packs and chargers from all CAS partners. With professionals who already use other devices powered by CAS batteries in mind, both models are available with or without the battery and charger.

The service life of the powerful battery does differ depending on the model, reaching up to 28 hours with the LAX 600 and up to 15 hours with the LAX 600 G. The charge level can be checked on the capacity display at any point. To extend the battery's service life, the lines can be switched on and off individually depending on the application. The battery can be fully recharged within a maximum of 45 minutes with the SC 30 rapid charger.

The new multi-line lasers from STABILA come with the following accessories: Target plate with magnetic holder and cross-hair for aligning the laser with a target point – for suspended ceilings, the target plate can be attached to metal rails with the magnetic holder; SUB 10 universal bracket with flexible position options and SWB 10 mountable wall bracket; sturdy carry case to ensure convenient transport and safe storage.



Thanks to GreenBeam technology, it's possible to work directly on the sharp green lines of the LAX 600 G multi-line laser from STABILA at distances of up to 40 metres. Photos: Stabila



The SUB 10 universal bracket (with 1/4" and 5/8" threads for mounting on tripods and with rare-earth magnets) and the SWB 10 wall bracket (with rough and fine adjustment to exactly align the horizontal laser line) come with the new LAX 600 and LAX 600 G multi-line lasers to allow flexible positioning at the required height for the job at hand. Photos: Stabila

Technical data	LAX 600/LAX 600 G
Laser class	2
Output	< 1 mW
Laser wavelength	635 nm/510–530 nm
Self-levelling range	+/- 4°
Levelling accuracy	0.3 mm/m
90° angle precision	0.3 mm/m
Measuring range of visible line	30 m*/40 m*
Operating time with CAS 12 V battery	Up to 28 hours/up to 15 hours
Protection class (without battery)	IP 65

\* Indoors under typical operating conditions