



New LAX 50 G cross line laser from STABILA:

Simple. Better. Visible. The cost-efficient all-rounder with bright green laser lines.

Self-levelling cross line laser with STABILA GreenBEAM technology – green laser lines for optimum visibility. Laser lines are long and fine to ensure accuracy whilst working. For levelling work at a distance of up to 30 m. Easy to use thanks to single-button system. Multi-purpose platform for flexible positioning and attachment.

With the new LAX 50 G self-levelling cross line laser, STABILA has developed a cost-efficient and extremely easy to use all-rounder that is the ideal companion particularly for craftsmen working in interior construction.

The laser is equipped with STABILA GreenBEAM technology, which provides the perfect conditions for ensuring accurate levelling work even over great distances. The bright green laser lines – one horizontal and one vertical line forming a sharp laser cross – offer optimum visibility up to 30 metres and are suitable for working quickly and directly on the laser lines. The latest generation of energy-saving laser diodes enables an operating time of up to seven hours.

The laser is extremely easy to use via an ON/OFF switch and is ready for use straight away thanks to pendulum technology designed for the construction site – simply switch it on and off you go! A circular vial is used to pre-align the laser within a self-levelling range of approximately 4.5 degrees.

The laser can be positioned flexibly and variably to meet the needs of the application: the integrated clamping device on the rear of the unit enables it to easily be fastened to pipes up to 30 millimetres in diameter, for example. A perfect accompaniment to the unit comes in the form of a rotating multi-purpose platform, which allows for the flexible use of the laser both on the floor as well as on camera and construction tripods. Equipped with a strong rare-earth magnet system, the platform is also used to position the unit on metal objects such as U-profiles. The platform also features a hanging hole to attach it directly to the wall.

The LAX 50 G is manufactured in accordance with protection class IP 53 and is therefore protected against dust deposits inside and against spray (up to 60° on the vertical plane). A pendulum locking mechanism protects the unit during transport. A belt pouch ensures easy transport and safe storage.

The three-piece set consisting of the LAX 50 G laser unit, multi-purpose platform, belt pouch and three AA 1.5 V batteries is available from retailers from mid-November 2017. A tripod and LT 30 telescopic laser support are also available as options to extend the unit's range of applications.

Technical specifications:

Laser class: 2

Output: < 1 mW

Laser wavelength: 510 – 530 nm

Levelling accuracy: +/- 0.5 mm/m

Self-levelling range: approx. +/- 4.5°

Measuring distance of visible line: 30 m

Operating time: up to 7 hours

Batteries included: 3 x 1.5 V alkaline, Mignon, AA

Protection class: IP 53

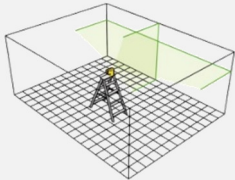
About STABILA:

STABILA is an internationally operating company based in Annweiler am Trifels, Germany. Founded in 1889, the company manufactures measuring tools that meet the highest standards of precision, durability, reliability and easy use. The development of new products and production techniques is a top priority. STABILA is a globally recognised measuring equipment specialist for spirit levels, lasers, folding rules and tape measures. More than 500 employees are committed to the success of STABILA.

STABILA images:



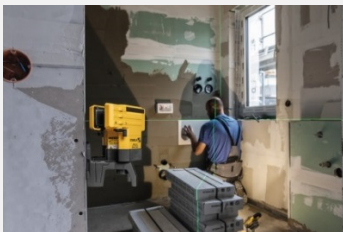
LAX 50 G cross line laser: Simple. Better. Visible. The cost-efficient all-rounder with bright green laser lines.



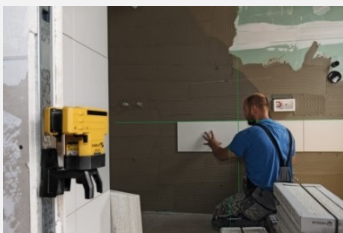
Optimum visibility – razor-sharp laser lines on any surface.



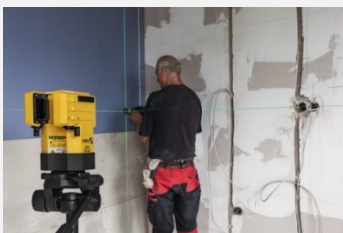
STABILA GreenBEAM technology: Razor-sharp, extremely bright and long laser lines for optimum visibility over the entire working area.



Carry out levelling work up to a distance of 30 metres with the LAX 50 G cross line laser: joinery, tiling, decorating and installation work in the electrical, sanitation, heating and air conditioning sectors.



Tiling with the STABILA LAX 50 G cross line laser: work directly on the green laser beam – quickly and accurately.



Installation work in the electrical, sanitation, heating and air conditioning sectors: simple, quick and reliable with the LAX 50 G cross line laser.



The strong rare-earth magnet system guarantees that the platform is securely attached to metal objects such as U-profiles.



Integrated clamping device on the rear of the LAX 50 G: easy to attach to pipes up to 30 millimetres in diameter.